

[Please note: You will need to log in to the gateway to access Whole School SEND resources. Log in is free but please can we ask that you tick the 'receive newsletter box' when you log in as this will ensure you are counted in our growing Community of Practice – Thank you!]

SEND Code of Practice



Chapter 6 of the Code of Practice is an essential read for all school staff. Why not get them to sign like they do for KCSIE??
Department for Education (2015) *Special Educational Needs and Disability Code of Practice: 0 to 25 Years: Statutory guidance for organisations which work with and support children and young people who have special educational needs or disabilities.*
[Online] Accessible from:
[https://assets.publishing.service.gov.uk/government/uploads/system/uploads/attachment_data/file/398815/SEND Code of Practice January 2015.pdf](https://assets.publishing.service.gov.uk/government/uploads/system/uploads/attachment_data/file/398815/SEND_Code_of_Practice_January_2015.pdf)

Guidance Report: SEN in Mainstream Schools.



The EEF have produced this useful evidence-based guidance to support mainstream schools in meeting SEND. This is really helpful to support action planning.
Education Endowment Foundation (2018). *Guidance Report, Special Educational Needs in Mainstream Schools.*
[Online] Accessible from:
https://educationendowmentfoundation.org.uk/public/files/Publications/Send/EEF_Special_Educational_Needs_in_Mainstream_Schools_Guidance_Report.pdf

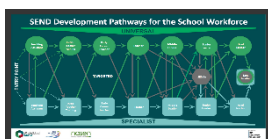
SEND Review



Whole school SEND have a series of free review guides to support self and peer review.
Whole School SEND (2020) *SEND Review Guide: A school-led approach to improving provision for all.*
[Online] Accessible from:
<https://www.sendgateway.org.uk/resources/send-review-guide-0>

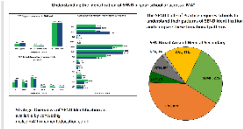

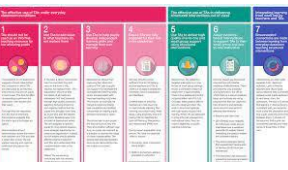


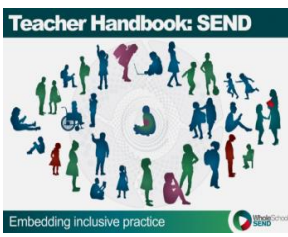

Sea View Trust offer expert SEND Review across the North West - [SEND Reviews | Embrace Teaching School Hub \(embracetsh.co.uk\)](https://www.sendgateway.org.uk/resources/send-review-guide-0)


SEND Development Pathways for the School Workforce



Sea View Trust in partnership with nasen and funded by the DfE have developed a SEND Career Development Pathways, a curated list of free resources and CPD. Read the guidance document first!

[Online] Accessible from:
<https://www.wholeschoolsend.org.uk/resources/send-development-pathways-school-workforce-guidance-document-including-self-study>

<p>Benchmarking</p> 	<p>Statistical analysis of SEND census data is available from the DfE Special educational needs in England: January 2022 - GOV.UK (www.gov.uk)</p> <p>If you would like further support in understanding the identification of SEND in your school or across a MAT</p> <p>Strategic Overviews of SEND Identification are available by contacting malcolm@firmamenteducation.co.uk</p>
<p>Governance</p> 	<p>Whole school SEND have a free review guide to support the review of SEND governance. This focusses on both the setting and on board effectiveness.</p> <p>Whole School SEND (2019) SEND Governance Review Guide</p> <p>[Online] Accessible from: SEND Governance Review Guide Whole School SEND</p>
<p>TA Deployment</p>  	<p>EEF provide evidence-based guidance on how TAs can be most effectively deployed. The thumbnail is the summary poster.</p> <p>Education Endowment Foundation (2018). Guidance Report, Making Best Use of Teaching Assistants.</p> <p>[Online] Accessible from: https://educationendowmentfoundation.org.uk/public/files/Publications/Teaching_Assistants/TA_Guidance_Report_MakingBestUseOfTeachingAssistants-Printable.pdf</p> <p>Whole school SEND have a specific review guide to support TA deployment</p> <p>Whole School SEND (2020) TA Deployment Review Guide: A school-led approach to improving provision for all.</p> <p>[Online] Accessible from: https://www.sendgateway.org.uk/resources/teaching-assistant-deployment-review-guide</p>
<p>Making Reasonable Adjustments</p> 	<p>Easy to understand advice for teachers, school staff and leaders to ensure compliance with the Equality Act 2010.</p> <p>Council for Disabled Children (2022) Disabled Children and the Equality Act 2010: what teachers need to know and what schools need to do, including responsibilities to disabled children and young people under the Children and Families Act 2014.</p> <p>[Online] Accessible from: Equality Act Guide for schools - FINAL EM EDIT.pdf (councilfordisabledchildren.org.uk)</p>
<p>Teacher Handbook</p> 	<p>A really useful manual with sections for teachers and subject leaders.</p> <p>Whole School SEND (2021) Teacher Handbook: SEND</p> <p>[Online] Accessible from: Teacher Handbook Whole School SEND</p>
<p>Parental Engagement</p> 	<p>EEF provide evidence-based guidance on how to engage parents effectively in their children's learning. Whilst not specific for SEND learners the 4 principles identified support parent partnership for all learners.</p> <p>Education Endowment Foundation (2018). Guidance Report, Parental Engagement.</p> <p>[Online] Accessible from: https://educationendowmentfoundation.org.uk/education-evidence/guidance-reports/supporting-parents</p>

<p>Adapting Teaching</p> 	<p>Differentiation – Why and How? is useful 7 page document produced by nasen that explains best practice in differentiation and busts some of the myths around the effectiveness of this practice.</p> <p>nasen (2018) <i>Differentiation- Why and How?</i> nasen pdf. [Online] Accessible from: https://www.egfl.org.uk/sites/default/files/Services_for_children/SEND/Differentiation%20Nasen.pdf</p> <p>What is meant by ‘adapting teaching’? is a 4 page document that explains the basics on how teaching can be adapted to meet SEND.</p> <p>nasen (2020) <i>What is meant by ‘adapting teaching’?</i> nasen pdf. [Online] Accessible from: https://nasen.org.uk/resources/adapting-teaching</p>
<p>Use of specialists</p> 	<p>The Sea View Trust publish Key findings and Recommendations from research into effective specialist deployment (page 7-10) can support schools in the commissioning and deployment of specialists.</p> <p>Holdsworth, A.Y., Parish, L. A., Findlay-Pidcock, J. (2021) <i>Deployment of Specialists in Mainstream Settings: Report</i>. [Online] Accessible from: https://nasen-prod-asset.s3.eu-west-2.amazonaws.com/s3fs-public/Deployment%20of%20Specialists%20in%20Mainstream%20Settings%20-%20Report_0.pdf</p>
<p>SENCOs</p> 	<p>The SENCO Induction pack is a useful document not only for those new to the role, It provides a range of useful information that can be easily shared.</p> <p>Nasen (2019) <i>SENCO Induction Pack</i>. [Online] Accessible from: https://www.sendgateway.org.uk/resources/senco-induction-pack-revised-edition</p>
<p>Action Planning</p> 	<p>The EEF have produced guidance on how to implement effective change. The resource and tools are available to download.</p> <p>Education Endowment Foundation (2018). <i>Guidance Report, Putting Evidence to work a school's guide to implementation</i>. [Online] Accessible from: https://educationendowmentfoundation.org.uk/education-evidence/guidance-reports/implementation</p>

Resource created by Angela Holdsworth Regional SEND Leader for Lancashire West Yorkshire – Updated 17/01/23

The Sea View Trust are currently looking for SEND innovation projects to upscale. To find out more and share your successes get involved in ‘What is the BIG idea for SEND?’ - embrace.TSH@theviewtrust.org